

# BENNY

TABLES

PLEDGE



## BENNY: TABLES

---

Benny is a range of tables offering different heights and table top sizes on round or four star table bases in a choice of colours. The top can be specified in maple, walnut, beech or white to complement any environment.

# BENNY

---

## MATERIALS

### TABLE TOPS

18 mm MFC Top 600 or 800 mm diameter

Finish: White

### BASE

Pedestal base with round or four star base

## POLICY

Pledge manufacture in the United Kingdom and are a true manufacturer producing wooden, steel and upholstered products at our site in Leighton Buzzard.

We are committed to the efficient use of energy and continually review our processes to reduce environmental impact seeking to utilise technologies which minimise energy and material consumption in our products and services.

## CERTIFICATION

Pledge is ISO9001 & ISO14001 certified, guaranteeing quality and environmental management standards are met.

Furniture Industry Sustainability Programme (FISP)

Furniture Industry Research Association (FIRA)

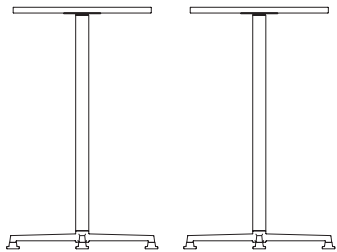
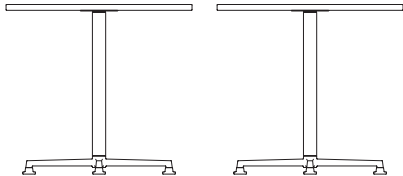
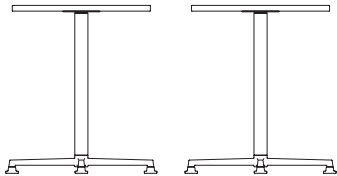
## OPERATION

Pledge offers a 5-year warranty on structural components. Fabrics are covered by the manufacturers' guarantee.

These terms apply to Pledge Seating used only in general office environments during normal working hours and subject to fair wear and tear. Terms for seating used 24/7 application are available on request.

Our full terms concerning warranties can be found in our Seating Price Guide under terms and conditions section 9.

# BENNY



## BN1 | 600 mmø Meeting Table.

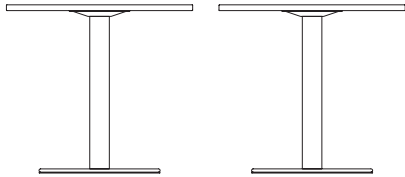
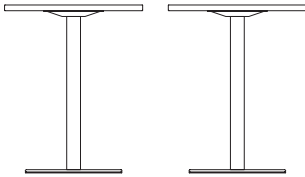
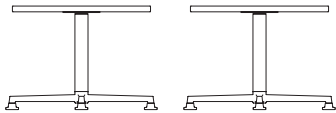
Overall Height	730 mm
Overall Width	600 mm
Overall Depth	600 mm
Top Depth	600 mm
Top Thickness	18 mm
Weight	21 kg

## BN2 | 800 mmø Meeting Table.

Overall Height	730 mm
Overall Width	800 mm
Overall Depth	800 mm
Top Depth	800 mm
Top Thickness	18 mm
Weight	25.4 kg

## BN5 | 600 mmø Poseur Table.

Overall Height	1050 mm
Overall Width	600 mm
Overall Depth	600 mm
Top Depth	600 mm
Top Thickness	18 mm
Weight	22 kg



## BN7 | 600 mmø Coffee Table.

Overall Height	450 mm
Overall Width	600 mm
Overall Depth	600 mm
Top Depth	600 mm
Top Thickness	18 mm
Weight	20 kg

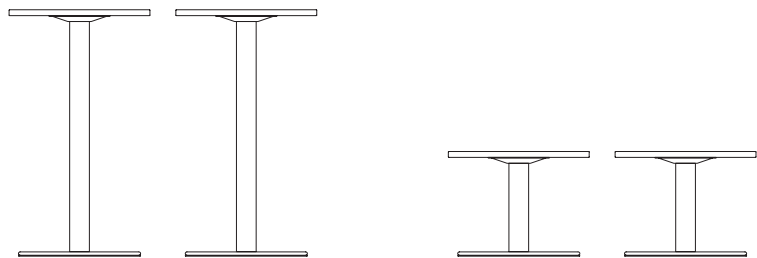
## BN11 | 600 mmø Meeting Table.

Overall Height	450 mm
Overall Width	600 mm
Overall Depth	600 mm
Top Depth	600 mm
Top Thickness	18 mm
Weight	20 kg

## BN12 | 800 mmø Meeting Table.

Overall Height	450 mm
Overall Width	600 mm
Overall Depth	600 mm
Top Depth	600 mm
Top Thickness	18 mm
Weight	20 kg

# BENNY



**BN15 | 600 mmø Poseur Table.**

Overall Height	1050 mm
Overall Width	600 mm
Overall Depth	600 mm
Top Depth	600 mm
Top Thickness	18 mm
Weight	21 kg

**BN7 | 600 mmø Coffee Table.**

Overall Height	450 mm
Overall Width	600 mm
Overall Depth	600 mm
Top Depth	600 mm
Top Thickness	18 mm
Weight	20 kg

# BENNY

---

## TABLE TOP COLOURS



White (WH)



Light Oak (LO)



Beech (BE)

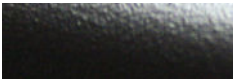


Walnut (WL)

## BASE FINISH



White (W)



BLACK (B)



Chrome (C)



Silver painted (P)

## OPTIONS

BN1/BN2/BN5/BN6 - Chrome Glides (CHG)

## NOTES

N/A

## ENVIRONMENTAL

Recycled Content: 45% (estimated)  
Recyclable Content: 100%

Plastic components >25 g are labelled in accordance with ISO 11469

## HQ

Pledge Chairs Ltd.  
Mill Road  
Leighton Buzzard  
Bedfordshire  
LU7 1BA  
+44 (0)1525 376181  
[sales@pledgechairs.co.uk](mailto:sales@pledgechairs.co.uk)

## SHOWROOM

First Floor  
21-22 Great Sutton Street  
Clerkenwell  
London  
EC1V 0DY  
+44 (0)20 7253 7277  
[showroom@pledgechairs.co.uk](mailto:showroom@pledgechairs.co.uk)

[www.pledgechairs.co.uk](http://www.pledgechairs.co.uk)